

Datasheet

→ **FRVKLOO** 

06/08/2026



Technical data

Illuminated emergency stop

Type	FRVKLOO
Series	SHORTRON®
Rubric	Emergency-stop
Approvals	CCC, CE, cURus, TÜV_Süd, UKCA



→ General data

Design	Round
Illumination	Yes
Operating temperature	-25 °C ... 70 °C
Panel cut-out	Ø 22.3 mm
Mounting plate thickness	1 mm ... 4.5 mm
Mounting depth	18.1 mm
Lens colour	Red
Enclosure colour	Yellow
Weight	18.01 g
Contact material	AgNi
Storage temperature	-40 °C ... 80 °C

Standards EN 60947-5-1
EN 60947-5-5
EN ISO 13850

Degree of protection front IP66
IP67

→ Electrical data

Conditional short circuit current 1000 A

*Rated operating voltage
IEC/EN 60947-5-1* 240 V AC
120 V AC
250 V DC
125 V DC
60 V DC
24 V DC

*Rated operating current
IEC/EN 60947-5-1* 1.5 A AC
3 A AC
0.27 A DC
0.55 A DC
1 A DC
2 A DC

*Rated insulation voltage
IEC/EN 60947-5-1* 250 V AC/DC

Rated impulse withstand voltage 2.5 kV

Contact resistance < 50 mΩ NC new state

Electrical lifetime 50,000 switching cycles at rated voltage

*Enclosure type
information acc. to UL* Type 4X (Indoor) front face

*Utilisation category
IEC/EN 60947-5-1* AC-15 B300
DC-13 Q300

Contact type 2NC

Short circuit protection SCPD 6 A Char. D

Lamp rating 30 V / 4 mA AC/DC at 24 V

Illuminant power max. 4 mA DC 24 V

Illuminant LED integrated

Illuminant connection X1...anode, X2...cathode

<i>Operating voltage illuminant</i>	max. 30 V AC/DC
<i>Illuminant colour</i>	White
<i>Bouncing time</i>	< 10 ms NC
<i>Rating information acc. to UL</i>	B300 24 V / 3 A DC Contact block
<i>Switching capacity</i>	240 V AC/DC 1.5 A 42 V 250 mA
<i>Breaking capacity IEC/EN 60947-5-1</i>	10 Ie AC 1.1 Ie DC
<i>Thermal continuous current IEC/EN 60947-5-1</i>	5 A AC
<i>Overvoltage category</i>	II
<i>Pollution degree</i>	2

→ Mechanical data

<i>Connection</i>	Faston terminals 2.8 mm x 0.8 mm
<i>Tightening torque fixing nut</i>	1.3 Nm ... 1.9 Nm
<i>Mounting position</i>	Any
<i>Release</i>	Twist to release left/right
<i>Mechanical lifetime</i>	50,000 switching cycles
<i>Switching position indicator</i>	Yes
<i>Foolproof</i>	Yes
<i>Positive opening</i>	Acc. to EN60947-5-1, appendix K

Safety note / installation note

- Designs for blade terminals: use partially or fully insulated blade terminals

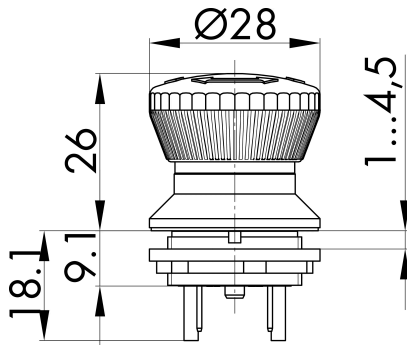
→ **Safety data**

B10d 250,000

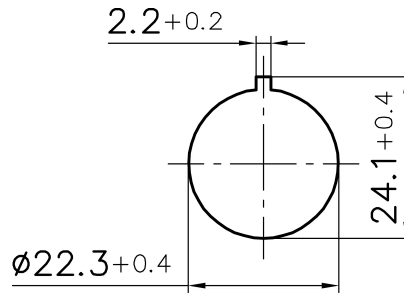
Lifetime 20 % NC

Technical drawings

→ Dimensional drawing



→ Cutout dimensions



→ Circuit diagram

