

Datasheet

→ **FRVKOO_C001** 

06/08/2026



Technical data

Emergency stop with integrated 4-pin M12 connection

Type	FRVKOO_C001
Series	SHORTRON® connect
Rubric	Emergency-stop
Approvals	CE, cURus, TÜV_Süd, UKCA



→ General data

Design	Round
Operating temperature	-25 °C ... 70 °C
Panel cut-out	Ø 22.3 mm
Mounting plate thickness	1 mm ... 4.5 mm
Mounting depth	27 mm
Lens colour	Red
Enclosure colour	Yellow
Weight	19.68 g
Contact material	AgNi
Storage temperature	-40 °C ... 80 °C
Standards	EN 60947-5-1 EN 60947-5-5 EN ISO 13850

Degree of protection front	IP66 IP67
Degree of protection rear	IP65 with connected M12 IP67 with connected M12
Material group	I

→ Electrical data

Conditional short circuit current	1000 A
Rated operating voltage IEC/EN 60947-5-1	35 V AC 35 V DC
Rated operating current IEC/EN 60947-5-1	4 A AC 2 A DC
Rated insulation voltage IEC/EN 60947-5-1	250 V AC 250 V DC
Rated impulse withstand voltage	2.5 kV contact block
Contact resistance	< 50 mΩ NC new state
Electrical lifetime	50,000 switching cycles at rated voltage
Enclosure type UL/IEC 60947-5-5	Type 4X (Indoor) front face
Utilisation category IEC/EN 60947-5-1	AC-15 DC-13
Contact type	2NC
Short circuit protection SCPD	Safety fuse 4 A gG
Bouncing time	< 10 ms NC
Rating UL/IEC 60947-5-5	35 V / 2 A DC Ui 250 V
Rating UL 508, IEC 60947-5-5	Ith 35 V / 3 A AC
Switching capacity	35 V AC/DC 4 A 35 V DC 2 A
Breaking capacity IEC/EN 60947-5-1	10 Ie AC 1.1 Ie DC

Thermal continuous current IEC/EN 60947-5-1 4 A AC
4 A DC

Overvoltage category II

Pollution degree 2

Safety instructions / installation instructions

- The plug connector must not be connected or disconnected under load
- The individual plug pin may be loaded with max. 4 A
- not suitable for use under water
- when used outdoors, the M12 connections must be protected separately against corrosion

Pin assignment

Pin	Contact
1	NC (1)
2	NC (1)
3	NC (2)
4	NC (2)

→ Mechanical data

Connection M12 connector 4-polig A coded

Tightening torque connection max. 0.4 Nm

Tightening torque fixing nut 1 Nm ... 1.7 Nm

Mounting position Any

Release Twist to release left/right

Mechanical lifetime 50,000 switching cycles

Switching position indicator Yes

Torque UL/IEC 60947-5-5 1 Nm ... 1.7 Nm head nut

Foolproof Yes

Positive opening Acc. to EN60947-5-1, appendix K

Safety instructions / installation instructions

- The M12 connection must not be subjected to mechanical loads, ensure sufficient strain relief!

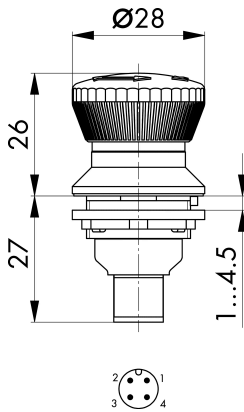
→ Safety data

B10d 250,000

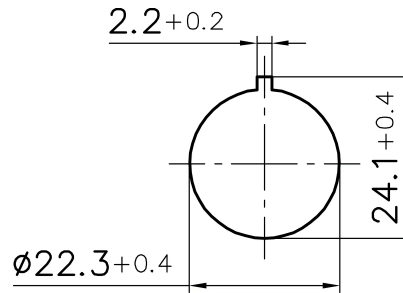
Lifetime 20 % NC

Technical drawings

→ Dimensional drawing



→ Cutout dimensions



→ Circuit diagram

