

Datasheet

→ **FRVKOOI_C112**

06/08/2026



Technical data

Emergency stop with integrated 5-pin M12 connection

Type	FRVKOOI_C112
Series	SHORTRON® connect
Rubric	Emergency-stop
Approvals	CE, cURus, TÜV_Süd, UKCA



→ General data

Design	Round
Operating temperature	-25 °C ... 70 °C
Panel cut-out	Ø 22.3 mm
Mounting plate thickness	1 mm ... 4.5 mm
Mounting depth	28.5 mm
Lens colour	Red
Enclosure colour	Yellow
Weight	20.76 g
Contact material	AgNi
Storage temperature	-40 °C ... 80 °C
Standards	EN 60947-5-1 EN 60947-5-5 EN ISO 13850

Degree of protection front	IP66 IP67
Degree of protection rear	IP65 with connected M12 IP67 with connected M12
Material group	I

→ Electrical data

Conditional short circuit current	1000 A
Rated operating voltage IEC/EN 60947-5-1	35 V AC 35 V DC
Rated operating current IEC/EN 60947-5-1	2 A AC 2 A DC
Rated insulation voltage IEC/EN 60947-5-1	50 V AC 50 V DC
Rated impulse withstand voltage	2.5 kV contact block
Contact resistance	< 50 mΩ NC new state < 50 mΩ NO new state
Electrical lifetime	50,000 switching cycles at rated voltage
Enclosure type UL/IEC 60947-5-5	Type 4X (Indoor) front face
Utilisation category IEC/EN 60947-5-1	AC-15 DC-13
Contact type	2NC 1NO
Short circuit protection SCPD	Safety fuse 2 A gG
Bouncing time	< 10 ms NC < 10 ms NO
Rating UL/IEC 60947-5-5	35 V / 2 A AC/DC Ith 2 A Ui 50 V
Switching capacity	35 V AC/DC 2 A
Breaking capacity IEC/EN 60947-5-1	10 Ie AC 1.1 Ie DC

<i>Thermal continuous current</i>	2 A AC
<i>IEC/EN 60947-5-1</i>	2 A DC

<i>Overvoltage category</i>	II
-----------------------------	----

<i>Pollution degree</i>	2
-------------------------	---

Safety instructions / installation instructions

- The plug connector must not be connected or disconnected under load
- The individual plug pin may be loaded with max. 2 A
- not suitable for use under water
- when used outdoors, the M12 connections must be specially protected against corrosion

→ Mechanical data

<i>Connection</i>	M12 connector 5-polig A coded, AIDA
-------------------	-------------------------------------

<i>Tightening torque connection</i>	max. 0.4 Nm
-------------------------------------	-------------

<i>Tightening torque fixing nut</i>	1 Nm ... 1.7 Nm
-------------------------------------	-----------------

<i>Mounting position</i>	Any
--------------------------	-----

<i>Release</i>	Twist to release left/right
----------------	-----------------------------

<i>Mechanical lifetime</i>	50,000 switching cycles
----------------------------	-------------------------

<i>Switching position indicator</i>	Yes
-------------------------------------	-----

<i>Torque</i> <i>UL/IEC 60947-5-5</i>	1 Nm ... 1.7 Nm head nut
--	--------------------------

<i>Foolproof</i>	Yes
------------------	-----

<i>Positive opening</i>	Acc. to EN60947-5-1, appendix K
-------------------------	---------------------------------

Safety instructions / installation instructions

- The M12 connection must not be subjected to mechanical loads, ensure sufficient strain relief!

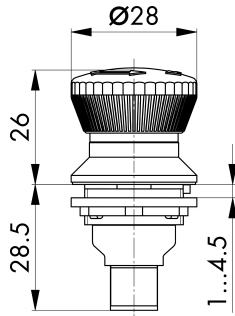
→ **Safety data**

B10d 226,000

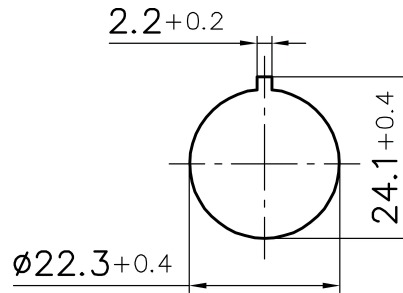
Lifetime 20 % NC

Technical drawings

→ Dimensional drawing



→ Cutout dimensions



→ Circuit diagram

